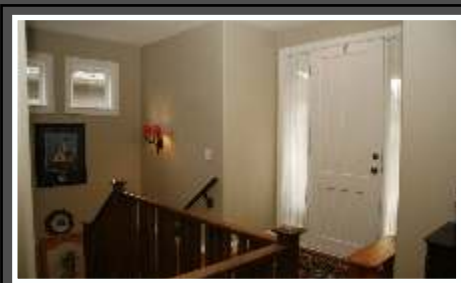


Eagle Ridge

6482 Taluswood Place \$598,000

Nanaimo Homes
.com



Exceptional

6482 Taluswood Place

Gorgeous main level entry ocean view home in Fabulous Eagle Ridge. This Silverwood construction 4 bedroom, 3 bathroom home is loaded with quality features such as; south facing front entry with private courtyard, hardwood and ceramic floors, glass transoms, soaring 9 & 11 foot ceilings, large foyer with oversized closet to welcome your guests, built-ins on either side of gas fireplace in great room, French doors onto optional formal dining room or den. Master suite offers incredible ocean views while maximizing privacy with up/down blinds, his/her closets, spectacular ensuite with oversized soaker tub, double vanity sinks, and separate tiled shower, lots of kitchen cupboards with pull out and pot drawers, under cabinet lighting, beautiful tiled backsplash, and more. Remaining two bedrooms on lower level with large family room and sliding door access to fully fenced, beautifully landscaped back yard. Extra large closets in every room, phantom screens on front and back doors, and an absolutely incredible amount of storage space. The stunning sunsets off Winchelsea Islands and Schooner Cove Marina can be enjoyed from extra large windows in almost every ocean facing room of this home! Data & measurements are approximate and should be verified if important.



Specifications

ADDRESS: 6482 Taluswood Place

TAXES: 4575.34

ZONING: Single Family

LOT SIZE: 6459 Square Feet

HOME SIZE: 3220 Square Feet

AGE: Built in 2005

BEDROOMS: 4

BATHROOMS: 3 (1 Ensuite)

FIREPLACE: 1 Natural Gas

EXTERIOR: Stone & Hardi Plank

FLOORING: Hardwood/Ceramic Tile/Carpet

ROOF: Fiberglass Shingle

HEATING: Forced Air

FUEL: Natural Gas

PARKING: Double Car Garage



MAIN LEVEL



LOWER LEVEL

Maximum Exposure on...

Nanaimo Homes
.com

PROFESSIONAL
PHOTOGRAPHY

ONLINE PDF FULL COLOUR
FEATURE SHEETS

INTERACTIVE FLOOR PLANS
WITH PHOTO HOT ZONES &
360 ROOM TOURS

AERIAL PHOTOGRAPHY

The screenshot shows a real estate website interface. At the top, there is a navigation bar with icons and labels for: Photo Gallery, Floor Plans & Virtual Tours, Feature Sheet, Aerial View, Map of Area, and Google Earth View. Below the navigation bar is a large main image of a house with a stone and wood exterior and a two-car garage. To the right of the main image is a grid of 12 smaller thumbnail images showing various interior rooms like the living room, kitchen, and bedrooms. Below the thumbnails is a text prompt: "Click on the thumbnails above to view fullsize images".

 Add Property To Favorites  Request An Appointment  Request More Information



AREA AMENITIES



WOODGROVE MALL



EAGLE POINT VIEW



MCGIRR ELEMENTARY



DOVER BAY

AERIAL CITY VIEW



GOOGLE EARTH VIEW



Eagle Ridge

6482 Taluswood Place \$598,000


Nanaimo Homes
.com



**CAREER ACCOMPLISHMENTS 2000 - PRESENT*
TOP WEBSITE AWARD - RE/MAX WESTERN CANADA*
VANCOUVER ISLAND BUSINESS EXCELLENCE AWARD*
SOLE RECIPIENT OF RE/MAX'S HIGHEST AWARD - DIAMOND CLUB*



DEREK GILLETTE P.R.E.C. RE/MAX of Nanaimo ph 250.751.1223 derek@derekgillette.com www.nanaimohomes.com